

## PatchMAX 100A

\$8,800

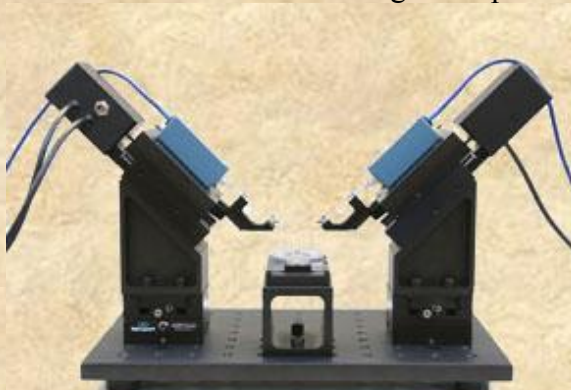
Patch clamping system



## ChannelMAX 100A Mini

\$14,800

Two patch clamp or  
One two-electrode voltage clamp



## ChannelMAX 100A Twin

\$23,980

Four patch clamp or  
Two two-electrode voltage clamp



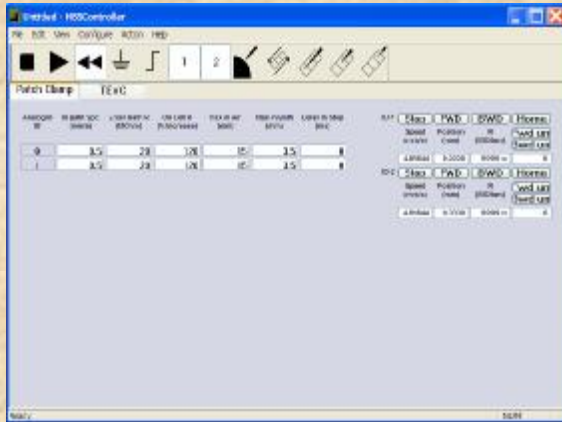
- **Incredibly small footprint** - This 8 inch x 8 inch patent pending replaces the microscope and the manipulator in the traditional rig.
- **Automatic membrane detection** - The movement of the patch pipette is controlled by a computer and can be programmed to stop within 0.1 um after the tip touches the cell membrane.
- **High seal success rate** - The computer controlled system eliminates human errors so that the success rate of making gig ohm seals improves.
- **Excised patch** - This is the only automated patch clamp system that offers excised patch feature.
- **Save and reuse sealing parameters** - Once you find the perfect set of parameters, save them so that you and people in your lab can always reach the same peak performance.
- **Noise-free recording** - There is no current going through motor so recording is noise free.
- **Low drift** - The motorized stage can hold its micro-step position (50 nm resolution) overnight, even without current!
- **Fast solution change** - Computer controlled stepper motors bring electrodes to perfusion pipettes. Solution change is as simple as clicking a button.
- **Manipulator can be used in manual mode (more)**

- **A system for both patch clamp and two-electrode voltage clamp** - This patent pending design is based on [PatchMAX 100A](#) except it comes with two computer controlled manipulators instead of one. With the additional micromanipulator, the system is equipped for two oocyte or cultured cell patch clamp experiments, or one two-electrode voltage clamp experiment.
- **Economical choice** - This system is more cost effective than the traditional electrophysiology setup.
- **High quality patch clamp** - Enjoying the same high quality patch clamp as PatchMAX 100A, ChannelMAX 100A patch clamp system is low drift, vibration free and noise free.
- **Automated two-electrode voltage clamp** - Computer controls the electrode movement so that they stop after entering an oocyte.
- **Switching between patch clamp and two-electrode voltage clamp is easy** - The system is designed so that it can switch between patch clamp and two-electrode voltage clamp easily.
- **Save space** - As the system can be used for both two-electrode voltage clamp and patch clamp, less lab space is required. You do not need two data acquisition systems.
- **Higher efficiency, less labor-intensive**

- **Run up to four patch clamp experiments or two two-electrode voltage clamp experiments simultaneously** - This patent pending design is based on [ChannelMAX 100A Mini](#) except it comes with four computer-controlled manipulators. With the two additional micromanipulator, the system can do up to four patch clamp experiments simultaneously, or two two-electrode voltage clamp experiment. With this new design, the system increases efficiency, decrease equipment cost and save space. The experiment becomes less labor intensive.
- **High quality single channel recording** - Since the computer controlled manipulators guide the patch pipettes to touch the cell membrane in a more precise and consistent manner than manually controlled manipulators, the success rate of making seals is over 90%. The system possesses the same high quality, noise free, low drift and vibration free data acquisition as the [PatchMAX 100A](#) system.
- **Best value** - This system is more cost effective compared to the traditional electrophysiology setup or ChannelMAX 100A Mini.
- **Publish paper sooner!** - With increased efficiency, you will be able to publish papers sooner than anyone else.

## **New!** NBSController 3.0

Software for controlling  
PatchMAX 100A, ChannelMAX 100A and  
ChannelMAX 100A Twin



## **New!** Perfusion Chamber for

Tissue Culture Cells and  
Oocyte Excised Patches



Computer controlled stepper motors bring  
electrodes to perfusion pipettes in the  
chamber for fast and reliable solution  
change.

## Contact

**NeoBiosystems, Inc.**

**1407 Heckman Way  
San Jose, CA 95129**

**Telephone: 408-454-6026**

**FAX: 408-865-1856**

**General: [info@neobiosystems.com](mailto:info@neobiosystems.com)  
Sales: [sales@neobiosystems.com](mailto:sales@neobiosystems.com)  
Support: [support@neobiosystems.com](mailto:support@neobiosystems.com)**

**neo**  
biosystems



Automated Patch Clamp

Two-Electrode Voltage Clamp

Systems